



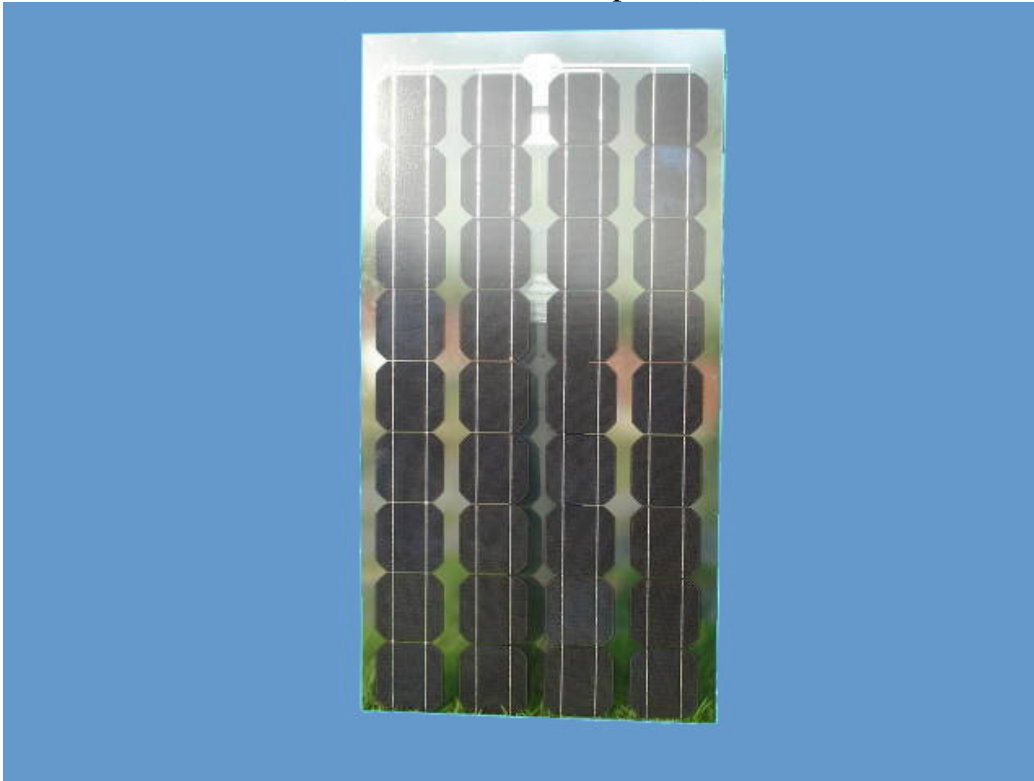
## Renewable Energy Group Limited

2301, 23/F, World-Wide House, 19 Des Voeux Road Central, Hong Kong

Tel: (852) 2862-0020 Fax: (852) 2169-6300 www.regrp.com info@regrp.com

### REG85W BIPV PANEL

(Glass+Glass Transparent)



REG 85W Mono-crystalline BIPV Panel(Glass+Glass Transparent)	
Specifications:	
Peak Output	85 Watt Direct Current
Dimensions(LxWxH)	1280x640x9mm
Weight	24kg
Glass	Low reflective tempered glass
Frame	None
Bonding	Transparent
PV Cells	36 Mono-crystalline
PV Cell Size	125 x 125mm
PV Cell Warranty	20 years
Bypass Diode	Yes
Junction Box	1000V insulation
Connector Cable	MC Type
Working Voltage	18.3VDC
Working Current	4.65A
Open Circuit Voltage	22.1VDC
Short Circuit Current	4.9A
Test Condition	AM1.5, 1000W/m <sup>2</sup> , 25°C



# Renewable Energy Group Limited

2301, 23/F, World-Wide House, 19 Des Voeux Road Central, Hong Kong  
Tel: (852) 2862-0020 Fax: (852) 2169-6300 www.regrp.com info@regrp.com

Glass thickness can be modified according to actual requirements.  
Specifications subject to change without further notice.

